

# Installation Manual for Pressure Flange Type Windows

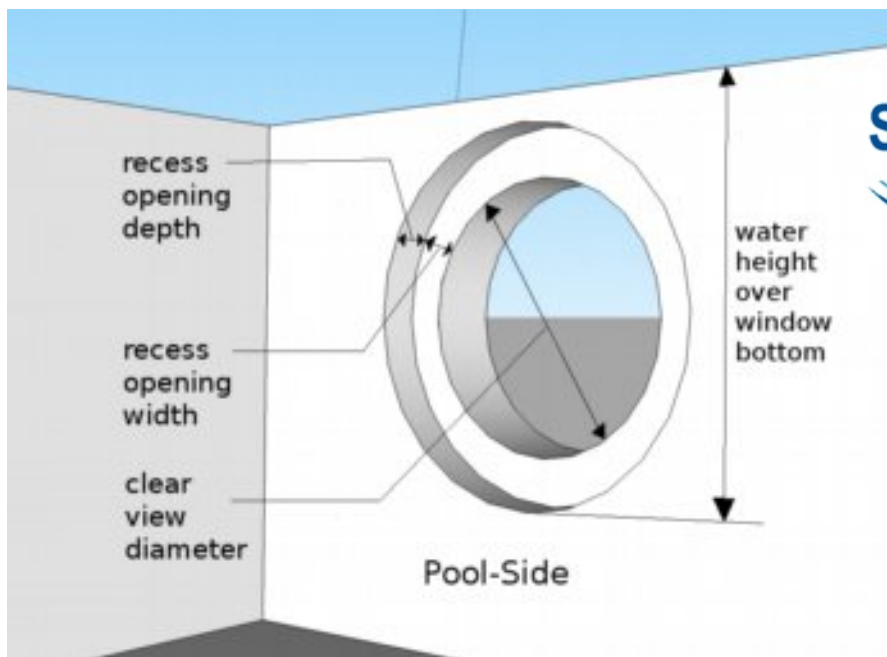


Abbildung 1: When casting the wall, make the window opening as shown in the sketch. The values shown are given in a separate document "work-drawing".



Abbildung 2: Pool beeing build, circular wall opening beeing prepared

# Installation Manual for Pressure Flange Type Windows



Abbildung 3: The picture shows a foto with the round opening. The green liner on top of the concrete opening is already prepared.



pressure flange

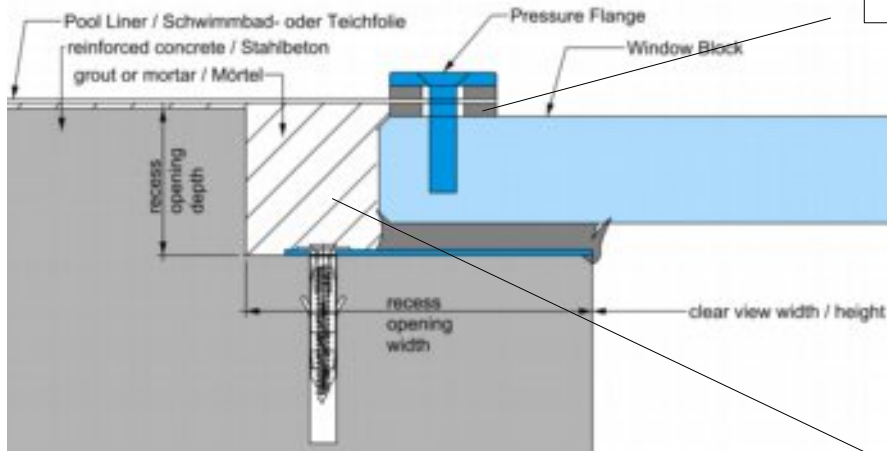
rubber 1

rubber 2

Abbildung 4: As an example the picture shows three round windows with pressure flange

rubber 1

# Installation Manual for Pressure Flange Type Windows



rubber 2

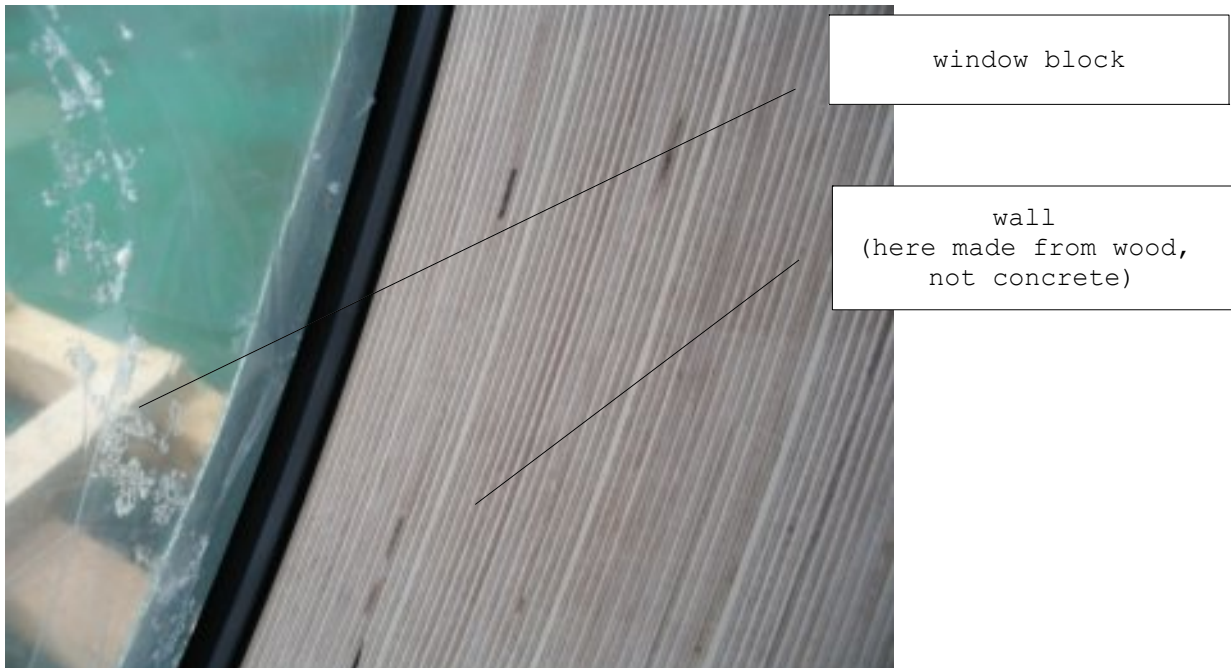
Abbildung 5: The sketch shows the profile of the windows mounted onto the wall

we now recommend  
2 component  
PU foam instead  
of grout -  
It is easier and faster



Abbildung 6: The window is lifted into the window opening

## Installation Manual for Pressure Flange Type Windows



**Abbildung 7:** Foto shows dry side (the observation side) of the window. Make sure the window sits flush with the wall. Fasten the window with screws/wallplugs.



**Abbildung 8:** The space besides the window block is filled with 2 component polyurethane foam

# Installation Manual for Pressure Flange Type Windows



**Abbildung 10: Make holes in (green) liner with a power drill – using a large steel drill. Cut remaining parts with sharp cutter knife.**

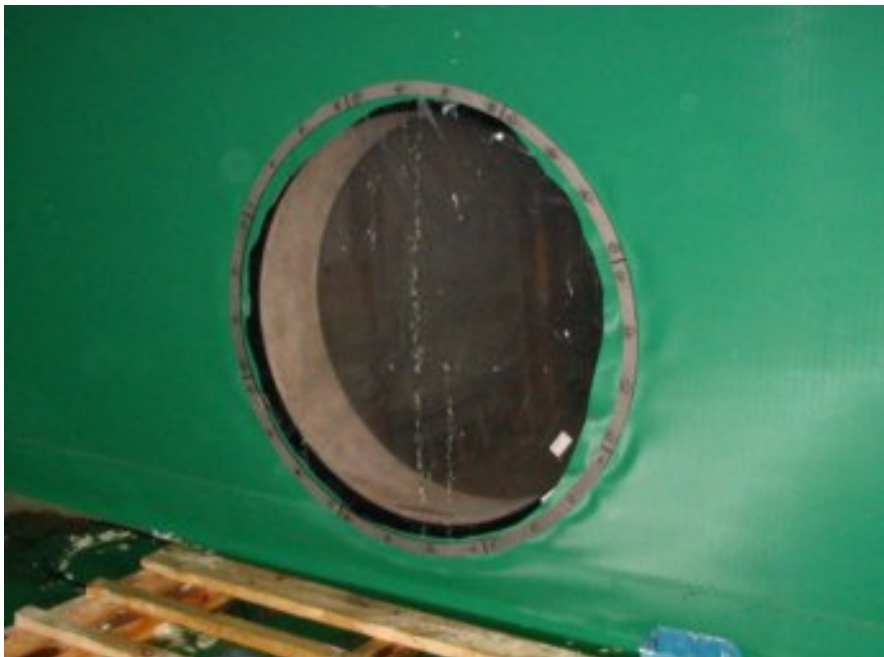
---

# Installation Manual for Pressure Flange Type Windows

---



**Abbildung 11: One rubber between liner and acrylic block (rubber 2). One rubber between liner and steel blind (rubber 1). Steel blind on top. Fasten all starting at the top of the window.**



**Abbildung 12: Finish! Now you can cut off the green liner on the inner side of the steel flange.**